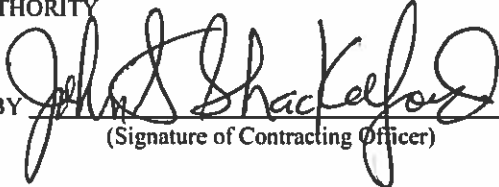


**WASHINGTON METROPOLITAN AREA TRANSIT AUTHORITY
SUPPLY AND SERVICE CONTRACT CQI16025**



**WASHINGTON METROPOLITAN AREA TRANSIT AUTHORITY
600 Fifth Street, NW, Washington, DC 20001-2651
AMENDMENT OF SOLICITATION / MODIFICATION OF CONTRACT**

1. AMENDMENT/MODIFICATION A001	2 Effective Date August 21, 2015
3. ISSUED BY PURCHASING SECTION Office of Procurement and Materials Lily Cheung, Procurement Manager 600 Fifth Street, NW Washington, DC 20001	4. ADMINISTERED BY Same as block 3.
5. CONTRACTOR NAME AND ADDRESS	6. FORM TYPE (Check only one) <input checked="" type="checkbox"/> AMENDMENT OF SOLICITATION NO CQI16025 DATED <u>August 3, 2015</u> (see block 7)
<p align="center">7. THIS BLOCK APPLIES ONLY TO AMENDMENTS OF SOLICITATIONS</p> <p><input checked="" type="checkbox"/> The above numbered solicitation is amended as set forth in block 10. The hour and date specified for receipt of Offers _____ is extended, <input checked="" type="checkbox"/> is not extended. Offerors must acknowledge receipt of this amendment prior to the hour and date specified in the solicitation, or as amended, by one of the following methods; (a) By signing and returning <u>two</u> copies of this amendment; (b) by acknowledging receipt of this amendment on each copy of the offer submitted; or (c) by separate letter or telegram which includes a reference to the solicitation and amendment numbers. FAILURE OF YOUR ACKNOWLEDGMENT TO BE RECEIVED AT THE ISSUING OFFICE PRIOR TO THE HOUR AND DATE SPECIFIED MAY RESULT IN REJECTION OF YOUR OFFER. If, by virtue of this amendment you desire to change an offer already submitted, such change may be made by telegram or letter, provided such telegram makes reference to the solicitation and this amendment, and is received prior to the opening hour and date specified.</p>	
8. ACCOUNTING AND APPROPRIATION DATA (If required)	
9. THIS BLOCK APPLIES ONLY TO MODIFICATIONS OF CONTRACTS/ORDERS	
10. DESCRIPTION OF AMENDMENT/MODIFICATION A. Solicitation CQI16025 is amended to incorporate Questions and Answers. Except as provided herein, all terms and conditions of the document referenced in block 10, as heretofore changed, remain unchanged and in full force and effect.	
11. CONTRACTOR/OFFEROR IS REQUIRED TO SIGN THIS MODIFICATION AND RETURN TO ISSUING OFFICE.	<input type="checkbox"/> CONTRACTOR/OFFEROR IS NOT REQUIRED TO SIGN THIS DOCUMENT
12. NAME OF CONTRACTOR/OFFICE BY _____ (Signature of person authorized to sign)	15. WASHINGTON METROPOLITAN AREA TRANSIT AUTHORITY BY  (Signature of Contracting Officer)

Appendix A
Questions and Answers
CQI16025

Question 1: Would you send a description and/or drawing of item R61220012



shunt example.pdf

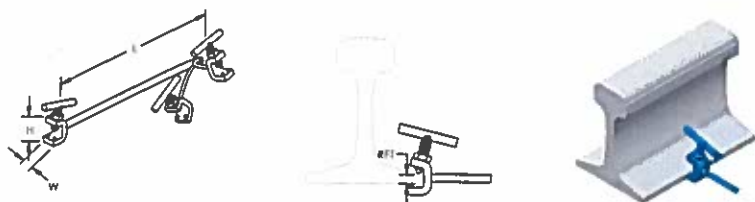
Where is this shunt attached to the rail (head or base) **Base.**

End of Amendment A001

Rail Base Track Circuit Dual Shunt, T-Handle – SBB2721S



- One easy-to-carry assembly that can be used on most common rail types
- Two shunts in one assembly: "Hard" zero ohm and 0.06 ohm
- No resistor to fail: Product is pre-engineered to provide permanent 0.06 ohm shunting
- Tested to assure reliability of 0.06 ohm shunt
- Orange insulation for high visibility
- Cable welded to terminal clamp
- Hardened contact points on clamps bite through rust and scale
- Unique design assures positive contact and firm grip
- T-shaped handle allows quick and easy tightening by hand



Part Number	SBB2721S
Material	Cadmium Bronze Steel Polyvinylchloride
Color	Orange
Length (L)	86"
Width (W)	1"
Height (H)	1 7/8"
Rail Foot Thickness (RFT)	0.6" Max
Shunt	Hard (Zero Ohm) Tuned (0.06 Ohm)
Conductor Size	3/16" Bondstrand 5/32" Stranded
Number of Contact Points	2
Standard Packaging Quantity	1 pc
UPC	78285671134

In order to meet the electrical requirements of 0.06 Ohms, the manufactured length may be longer than the indicated length.

WARNING

ERICO products shall be installed and used only as indicated in ERICO's product instruction sheets and training materials. Instruction sheets are available at www.erico.com and from your ERICO customer service representative. Improper installation, misuse, misapplication or other failure to completely follow ERICO's instructions and warnings may cause product malfunction, property damage, serious bodily injury and death.

Copyright © 2015 ERICO International Corporation. All rights reserved.
CADDY, CADWELD, CRITEC, ERICO, ERIFLEX, ERITECH, and LENTON are registered trademarks of ERICO International Corporation.

